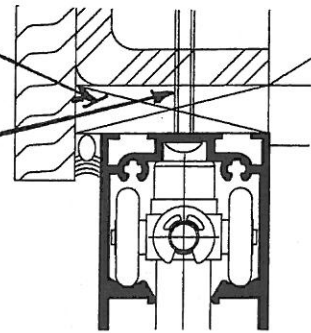
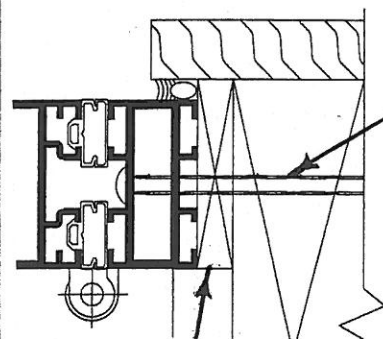


3/8" MAX. SHIM SPACE



HEAD 3

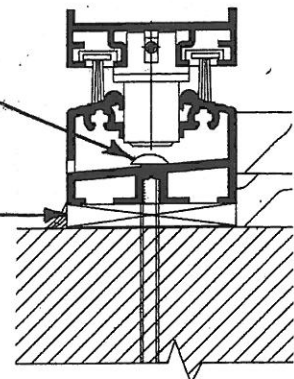
WOOD - #12 (0.216" DIAMETER) X 4" WOOD SCREWS  
MINIMUM 2-1/4" PENETRATION  
STEEL - #12 (0.216" DIAMETER) X 2-1/2" SELF DRILLING SCREWS  
MINIMUM 0.0478" (18 GAGE) SUBSTRATE  
MASONRY & CONCRETE - 1/4" DIAMETER X 2-3/4" TAPCONS  
MINIMUM 1-1/4" EMBEDMENT



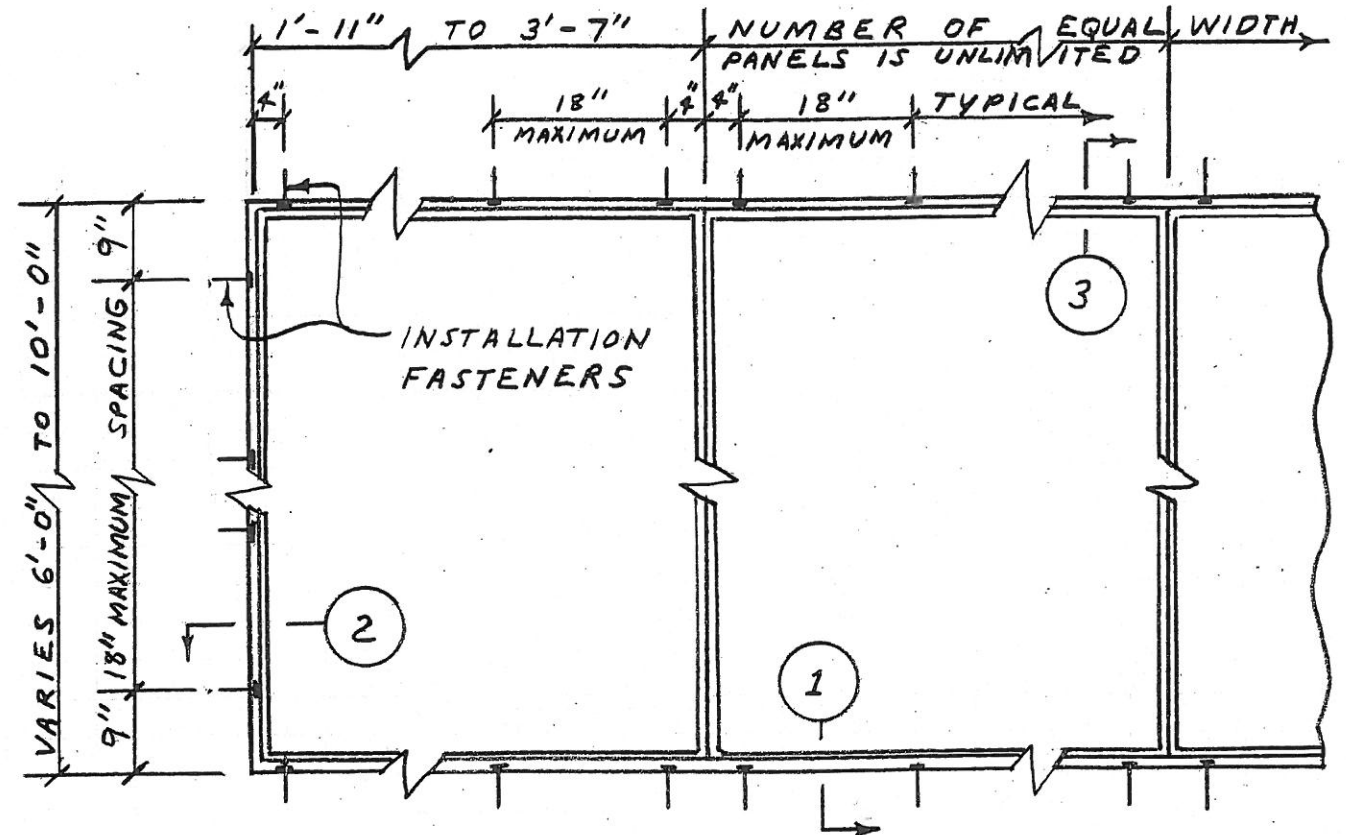
3/8" MAX. SHIM SPACE

JAMB 2

3/8" MAX. SHIM SPACE



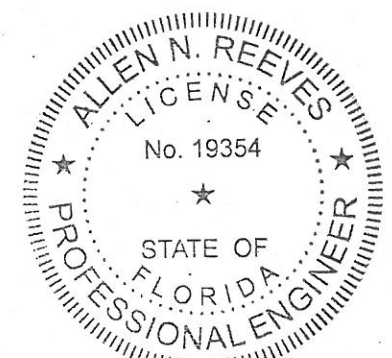
SILL 1



ELEVATION VIEW -- SL 45 SYSTEM INSTALLATION

GENERAL NOTES

- 1 FASTENER INSTALLATIONS SHOWN ON THIS SHEET ARE CAPABLE OF WITHSTANDING THE DESIGN WIND PRESSURES SHOWN ON THE CURVES IN THE FLORIDA EVALUATION REPORT WITH APPROPRIATE FACTORS OF SAFETY.
- 2 IF THE ROUGH OPENING IS GREATER THAN 3/8", SOLID WOOD BLOCKING MUST BE PROVIDED.
- 3 INWARD OPENING DETAILS ARE SHOWN ON THIS DRAWING. OUTWARD OPENING PANELS REQUIRE THE SAME INSTALLATION FASTENERS AT THE SAME SPACINGS.
- 4 INSTALLATION FASTENERS SHOWN IN RAISED SILL DETAIL ON THIS DRAWING ALSO APPLY TO ALL RECESSED TYPE SILLS.



Allen N. Reeves  
6 APRIL 2015

Allen N. Reeves, P.E.

Structural Engineer

Florida License #19354

HR Engineering, Inc.

DATE: 26 FEB. 2007

15020003  
PROJECT NO. 07020006 SHEET 1 OF 1

CLIENT: NANA WALL

BY: A. REEVES

PROJECT NAME: SL 45 SYSTEM